

STORM SURGE GUIDANCE BASED ON 1200UTC OF 3rd DECEMBER, 2023

STORM SURGE GUIDANCE FOR INDIA:

Storm surge of about 1 meter above astronomical tide likely to inundate near Repalle Mandal, Guntur District.

Storm Surge Warning Graphics based on Forecast Track

STORM SURGE HEIGHT INFORMATION:

* The below listed surge heights are over and above astronomical tide.

MANDAL/TALUK	DISTRICT	STATE/UNION TERRITORY	NEAREST PLACE OF HABITATION	STORM SURGE (m)	EXPECTED INUNDATION EXTENT (km)
Repalle	Guntur	Andhra Pradesh	Repalle	0.5-1.0	Upto 0.25
Machilipatnam	Krishna	Andhra Pradesh	Perupalem	0.5-1.0	Upto 0.17
Avanigadda	Krishna	Andhra Pradesh	Ramakrishnapuram	0.5-1.0	Upto 0.20
Chirala	Prakasam	Andhra Pradesh	Kotha Peta (Rural)	0.4-0.6	Upto 0.12
Ongole	Prakasam	Andhra Pradesh	Kanuparthi	0.2-0.6	Upto 0.13
Sullurpeta	Nellore	Andhra Pradesh	Duggaraja Patnam	0.2-0.6	Upto 0.18

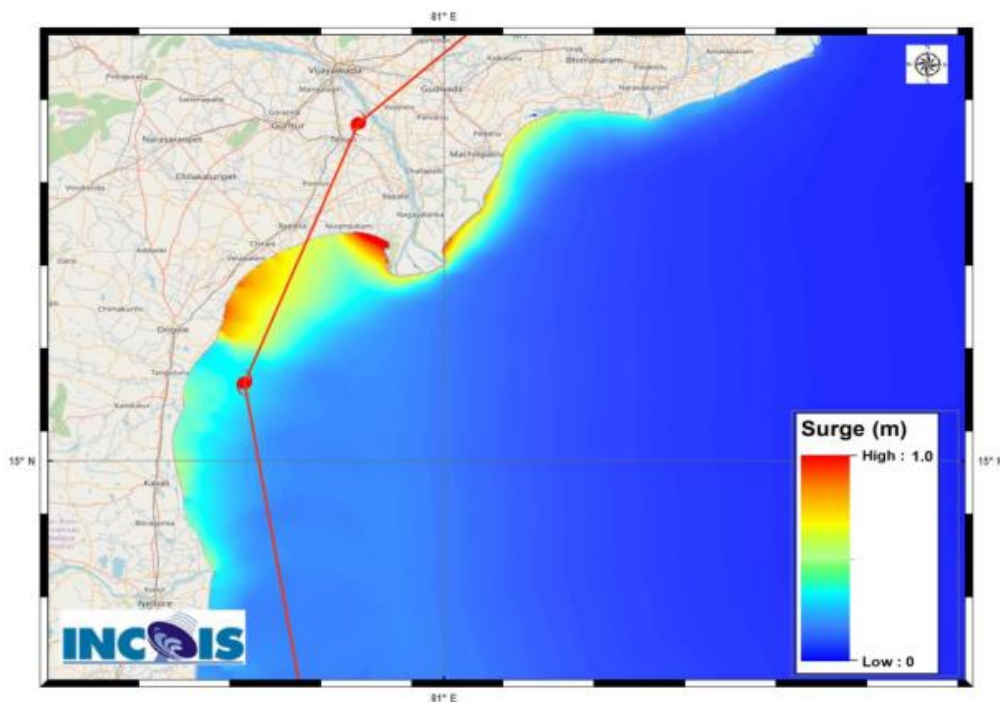


Figure: Storm Surge Map